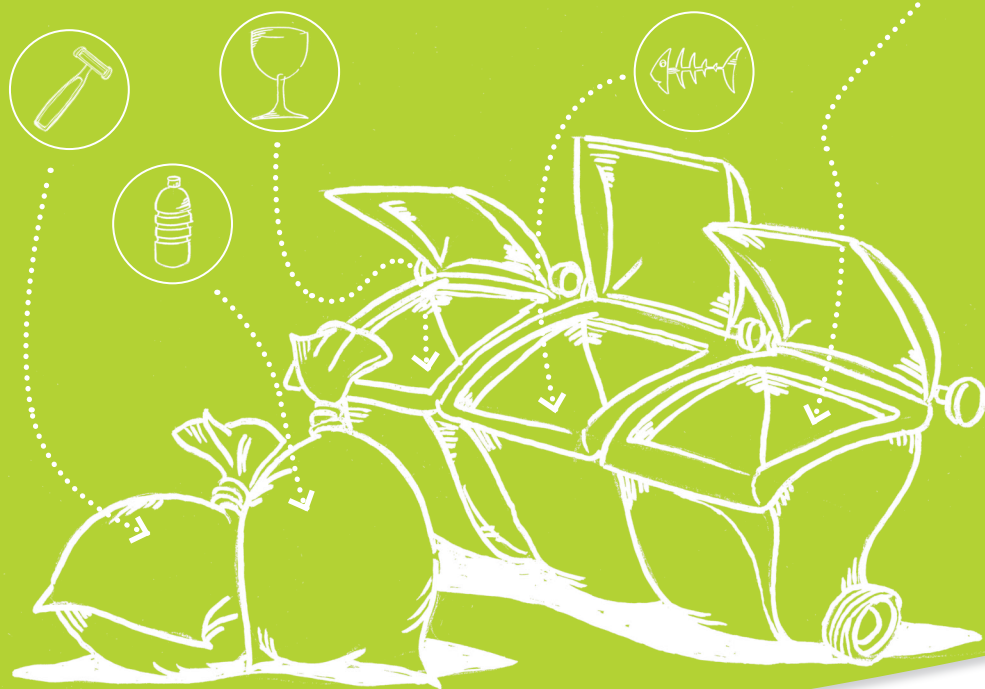


**TO EACH HIS OWN.
A CLEANER CITY
IS MORE YOUR CITY.**



**The integral door to door collection comes
to Gardone Valtrompia**

Presentation

Dear fellow citizens and distinguished companies

From **1st December 2014 important changes** concern **waste collection** in our city.

National legislation requires a **differentiated waste collection** target of up to **65%**; our town, with a percentage of **39%, is still a long way off this goal.**

For this reason, we have chosen a collection system that can achieve the desired results, while ensuring the achievement of the following objectives:

- greater protection of the environmental, the territory and the natural resources
- higher quality of the differentiated waste
- application, after a trial period, of a precise rate proportional to individual contributions; “those who differentiate less pay more”
- better accessibility and decorum of pedestrian areas
- recovery of additional car parking spaces

Therefore, from **Monday 1st December, 2014** the service will be reorganized with the removal of the roadside bins for general and organic waste and the launch of the **differentiated door to door collection service for these waste fractions. Paper, plastic, glass and cans** will continue to be collected with the **door to door** system, organized with special bins and bags.

This is a major change, which will involve some initial discomfort, but with your availability we plan to quickly reach the desired results.

Environmental Councillor
Piergiuseppe Grazioli

The Mayor
Pierangelo Lancelotti

Waste collection schedule



ORGANIC WASTE

Monday, Thursday and Saturday*



PAPER AND CARDBOARD

Thursday



UNSORTED

Thursday



PLASTIC

Saturday



GLASS AND METALS

Saturday

* Collection takes place on Saturdays throughout the year for activities with high productions of organic waste and the months of June, July and August for citizens also.

Waste must be displayed in an orderly manner on public roads and in a manner that does not interfere with vehicular and pedestrian traffic, **after 6 am on the collection day. Collection will takes place from 6 am.**

It is forbidden to put waste out at times or days other than those specified and in containers other than those authorized. In the event of non compliant containers, collection will not be carried out and the containers will be marked with a specific adhesive sticker. Furthermore, littering will be sanctioned in accordance with the prevailing regulation. After the start of the door to door service, transparent grey bags, yellow bags and any additional containers will be distributed at the Municipal Collection Centre in Via Roma.

Citizens are responsible for:

- cleaning the containers
- the replacement of worn, lost, stolen, broken containers, which is carried out at the Municipal Collection Centre

The municipal Ecosportello

The Ecosportello, open in the Gardone Val Trompia town hall in Via Mazzini 2, provides all information related to:

- waste collection
- request for new containers
- reservation of bulky waste collection
- enrolment and termination from the register
- tariff of waste

The opening hours are as follow:

Mon	Tue	Wed	Thu	Fri
10:00 AM - 12:30 AM	10:00 AM - 12:30 AM	10:00 AM - 12:30 AM	10:00 AM - 12:30 AM	10:00 AM - 12:30 AM
-	04:00 PM - 06:30 PM	-	04:00 PM - 06:30 PM	-

The Ecosportello can also be contacted on the **toll-free number 800 131077**

Organic waste goes in the brown container

Kitchen waste should be placed in the **biodegradable bags provided annually**. For collection the bags must be placed in the appropriate **containers for outdoor exposure delivered with the starter kit**. A special ventilated plastic container is also delivered, also brown, to be used in the home as an under-the-sink waste bin. Non domestic users may alternatively use the 120 and 240 litre brown wheeled containers provided on request. No other container selected by the user can be used.

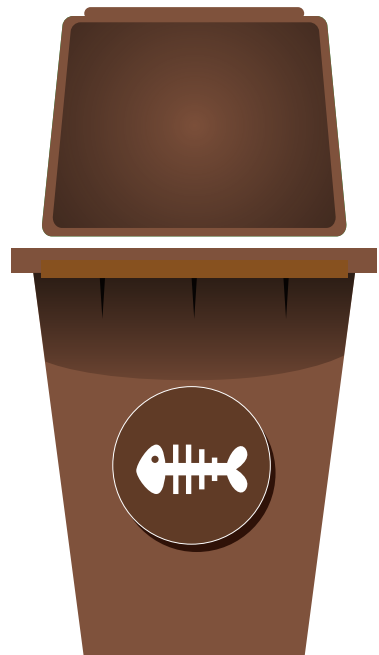
What to place in it:

raw or cooked kitchen waste and scraps, peel and vegetable and fruit scraps, fish and meat scraps, animal and fish bones, pasta and starchy foods, bread, rice, fruit stones, shells (eggs, walnuts, hazelnuts) chamomile and tea bags, coffee grounds, corks, used napkins and paper towels, soiled pizza boxes.

What NOT to place in it:

cuttings and prunings, gardening waste (grass, leaves, plant prunings), animal excrement, food packaging paper (oiled, laminated or aluminium coated), cigarette butts, liquids, oil, chemical products, nappies and sanitary napkins, rags, wood, ash (fireplace and barbecue).

The composter can also be used for the deposit of organic waste, which can be requested free of charge by calling the toll-free number 800 131077, from Monday to Friday from 8.00 AM to 12.45 AM and from 02.00 PM to 05.00 PM, and from 8.00 AM to 02.00 PM on Saturdays.



Paper goes into the green container

Paper and cardboard go into the **green container** already in the users' possession. Alternatively, non-domestic users can use the green wheeled containers that are available upon request. No other container selected by the user can be used.

What to place in it:

newspapers, notebooks and magazines (without adhesive, metal or plastic parts), Tetra Pak containers (milk, fruit juices and other beverages), paper bags, cardboard food trays and boxes, cardboard packaging for toys and garments, pizza boxes without food residue.

What NOT to place in it:

food soiled paper, chemical fax or copier paper, fiscal receipts, baking paper, laminated cards, plastic wrap, pizza boxes with food residue, plastic bags.



Glass and metals go into the blue container

The glass and metals go into the appropriate **blue containers** already in the users' possession. Non domestic users may alternatively use the 240 litre blue wheeled containers provided on request. No other container selected by the user can be used.

What to place in it:

glass bottles, glasses, jars, vases and carafes, trays and containers for preserving and freezing foods, tins and tubes for foods, tins for beverages and liquids, aluminium foil, cans, metal clothes hangers, metal caps, spray bottles not labelled T and/or F*, coffee pots.

What NOT to place in it:

ceramic plates and cups, incandescent and energy saving light bulbs, neon light bulbs, mirrors, glass-ceramic (like Pyrex) or ceramic containers, glasses and objects in crystal, plastic bags, spray bottles labelled T and/or F*.



REMEMBER:
empty, rinse and/or
clean the containers.



* hazardous, toxic, flammable or corrosive.



Where do I throw it?



A

Adhesive labels	Transparent grey bag
Aluminium and wood frames	Municipal Collection Centre/Bulky waste collection
Aluminium trays	Blue container
Artificial flowers	Transparent grey bag

B

Bags, cloths, shoes	Charity associations containers
Batteries	Road-side containers/Municipal Collection Centre
Bicycles	Municipal Collection Centre
Books (without plastic cover)	Green container
Bowls and other hard plastic objects	Municipal Collection Centre
Boxes for detergents	Green container
Brooms	Municipal Collection Centre
Building materials in small quantities from household tasks	Municipal Collection Centre
Bulbs	Municipal Collection Centre

C

Car batteries	Municipal Collection Centre
Cardboard boxes for fruit	Green container
Cardboard salt/sugar boxes	Green container
CD, DVD, videotapes and cases	Transparent grey bag
Cellophane film	Yellow bag
Ceramics	Transparent grey bag
Chipboard	Municipal Collection Centre
Clean napkins	Green container
Clean pizza boxes	Green container
Coffee grounds	Brown container
Coffee pods	Transparent grey bag
Computers, printers and keyboards	Municipal Collection Centre
Containers of household cleaning liquids (non-hazardous)	Yellow bag
Cooking Foil	Blue container
Corks	Brown container
Corrugated cardboard	Green container
Cosmetics	Transparent grey bag
Cushions	Transparent grey bag
Cutting boards of any material	Municipal Collection Centre

D





Demijohns (without straw)	Municipal Collection Centre/Bulky waste collection
Dirty pizza boxes	Brown container
Disposable plastic plates and cups	Yellow bag
Disposable razors	Transparent grey bag
Doormats	Municipal Collection Centre
Drinking glasses	Blue container
Dry leaves	Municipal Collection Centre

E

Electronic devices (phones, chargers, toys)	Municipal Collection Centre
Expired medicines	Municipal Collection Centre/Pharmacy containers
Extinguished fireplace ash	Transparent grey bag

F

Felt pads	Transparent grey bag
Flowers (in small amounts)	Brown container
Foil yoghurt lids	Blue container
Freezer bags	Yellow bag
Furniture (wardrobes, tables, chairs, sofas, beds, chests) of any material	Municipal Collection Centre/Bulky waste collection

G

General raw or cooked kitchen scraps	Brown container
Glass bottles	Blue container
Glass jars and aluminium cans for food	Blue container
Glass jugs	Blue container
Glass sheets	Municipal Collection Centre
Grass cuttings	Municipal Collection Centre
Graters	Transparent grey bag
Greaseproof paper for food	Transparent grey bag

H

High chairs for children	Municipal Collection Centre/Bulky waste collection
Household appliances (refrigerators, air conditioners, televisions, washing machines, radios, CD and DVD players)	Municipal Collection Centre/Bulky waste collection

I

Iron doors and cabinets	Municipal Collection Centre/Bulky waste collection
Ironing boards	Municipal Collection Centre/Bulky waste collection

J

Jars and other glass packaging	Blue container
--------------------------------	----------------

L

Large toys	Municipal Collection Centre
Lighters	Transparent grey bag

M

Mattresses	Municipal Collection Centre/Bulky waste collection
------------	--



Medical and x-ray plates	Transparent grey bag
Metal and wood coat hangers	Municipal Collection Centre
Metal caps	Blue container
Metal lids for glass jars	Blue container
Metal shelving	Municipal Collection Centre/Bulky waste collection
Mirrors	Municipal Collection Centre/Bulky waste collection
Monitors	Municipal Collection Centre
Mosquito nets	Municipal Collection Centre
Motorcycle helmets	Municipal Collection Centre

N

Nappies, diapers and sanitary towels	Transparent grey bag
Nets for vegetables and fruit	Yellow bag
Newspapers	Green container
Non-disposable plastic cups	Transparent grey bag
Non-Disposable plastic plates	Transparent grey bag
Non-plasticized exercise books and magazines	Green container
Non-plasticized flyers	Green container

O

Opal glass (perfume bottles)	Blue container
Oven paper	Transparent grey bag

P

Pallets	Municipal Collection Centre
Paper and cardboard packaging	Green container
Paper bags	Green container
Paper soiled with detergents or other substances	Transparent grey bag
Pet litter	Transparent grey bag
Plastic bottles	Yellow bag
Plastic coat hangers	Yellow bag
Plastic cutlery	Transparent grey bag
Plastic egg cartons	Yellow bag
Plastic pasta/snack wrappings	Yellow bag
Polystyrene containers for food	Yellow bag
Prunings	Municipal Collection Centre

R

Rags	Transparent grey bag
Razor blades	Transparent grey bag
Rubber	Transparent grey bag
Rubber gloves	Transparent grey bag
Rubber hoses	Transparent grey bag
Rucksacks	Municipal Collection Centre

S

Sandpaper	Transparent grey bag
Saucepans	Municipal Collection Centre



Skis and ski boots	Municipal Collection Centre
Small household appliances (scales, grills, irons, vacuum cleaners, hair dryers, microwaves)	Municipal Collection Centre
Small toys	Transparent grey bag
Soiled napkins	Brown container
Spectacles	Transparent grey bag
Sponges	Transparent grey bag
Spray cans with ecological propellant	Blue container
Stationery (pencils, pens, rulers)	Transparent grey bag
Steel cutlery	Municipal Collection Centre
Stuffed or padded objects	Transparent grey bag
Suitcases	Municipal Collection Centre
T	
Taps	Municipal Collection Centre
Tea filters	Brown container
Terracotta pots	Transparent grey bag
Tetra Pak containers	Green container
Till receipts	Transparent grey bag
Tin-plate and aluminium food containers and cans	Blue container
Toothbrushes	Transparent grey bag
Toothpaste tubes	Yellow bag
Toothpicks	Brown container
Trichloroethylene	Municipal Collection Centre
Tyres	Municipal Collection Centre
U	
Umbrellas	Municipal Collection Centre
Used mineral oil (motor oil) and vegetable oil (cooking oil)	Municipal Collection Centre
Used paper tissues	Brown container
Used vacuum cleaner bags	Transparent grey bag
V	
Video recorders	Municipal Collection Centre
W	
Wheels	Municipal Collection Centre
Wire mesh for beds	Municipal Collection Centre/Bulky waste collection
Wooden and plastic seats	Municipal Collection Centre/Bulky waste collection
Wooden boxes for fruit	Municipal Collection Centre
Wooden ice cream sticks	Brown container
Wooden slats	Municipal Collection Centre/Bulky waste collection
Wrapping paper	Green container
Y	
Yoghurt/dessert glass containers	Blue container



Plastic goes in the yellow bag

Plastic packaging should be placed exclusively in the **yellow bags** provided yearly. No other container selected by the user can be used.

What to place in it:

mineral water, milk, beverage and oil bottles, detergent, soap and cosmetic bottles and dispensers, containers for sauces, creams, yoghurt and ice cream, food trays (in PET, Styrofoam and polypropylene), blisters and shaped packages, bags for pasta, crisps, sweets, vegetables and frozen foods (even those coated with aluminium foil internally), fruit and vegetable nets, transparent film, shopping bags and sacks, bags for gardening products, detergents and pet food, flower and plant pots used for sale and transportation, packing materials (film, bubble wrap, Styrofoam peanuts), disposable plates and cups (without food residue), completely plastic clothes hangers, plastic fruit and vegetable containers.

What NOT to place in it:

toys, gym shoes, plastic slippers, car mats, furnishings and products in plastic, DVDs, CDs, music and video cassette tapes, photographs and photographic film, pens, umbrellas, disposable razors, jerry cans, buckets.

Important: the containers for Tetra Pak liquids should not be placed in the yellow bags but should be disposed of with paper products.



REMEMBER:
empty, rinse and/or
clean and crush the
containers.



The unsorted waste goes in the transparent grey bag

All waste that can not be recycled should only be placed in **transparent grey bags provided yearly**. No other container selected by the user can be used.

What to place in it:

dirty, oiled and sand paper, broken plates and ceramics in general (in limited quantity), non electronic plastic toys without batteries, CDs, DVDs, music and video cassettes, vacuum cleaner bags and sacks, nappies, sanitary napkins, animal excrement, band-aids, disposable razors, cigarette butts.

What NOT to place in it:

batteries, oils, medicines and hazardous materials (glues, varnishes, solvents, insecticides), energy saving and neon light bulbs, small mirrors.



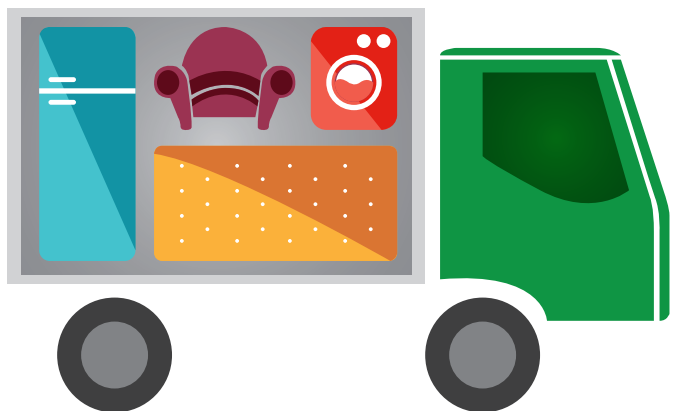
Bulky waste

For the disposal of bulky waste such as furniture and household appliances, a **free pick-up service on appointment** is available for the Gardone Valtrompia citizens. **Bookings** must be made **at least 3 days before** the scheduled date of the collection.

The waste must be placed on the street in the vicinity of ones home **by 8.00 AM**, in a place accessible to the vehicle without hindering the movement of vehicles and pedestrians. Collection takes place **every 1st Saturday of the month**.

No clean out operations for basements, attics or garages will be carried out, nor will any heavy labour be carried out on private property.

The collection can be booked by calling the **toll-free number 800 131077** from **Monday to Friday from 8.00 AM to 12.45 AM and from 02.00 PM to 05.00 PM** and from **8.00 AM to 02.00 PM on Saturdays**.



Municipal Collection Centre

The **Municipal Collection Centre in via Roma** is available for Gardone Valtrompia citizens.

Access is only allowed to citizens and non-domestic users based in the city of Gardone Valtrompia regularly entered in the register.

Entry to the Municipal Collection Centre is only possible with the Regional Services Card for the public or a special card delivered with the kit for non-domestic users.

The following waste can be taken to the Municipal Collection Centre: **bulky, paper and cardboard, glass and tins, plastic, trimmings and pruning off-cuts, wood, metallic scrap, WEEE *, lead-based batteries, depleted vegetable oils** (cooking oil), **depleted mineral oils** (automotive oil), **aggregate** (small quantities), **containers of products labelled T and/or F, organic waste, used clothing, neon light bulbs, monitors, expired drugs, printer cartridges, toner, tyres.**

***W.E.E.E. (Waste Electrical and Electronic Equipment)**

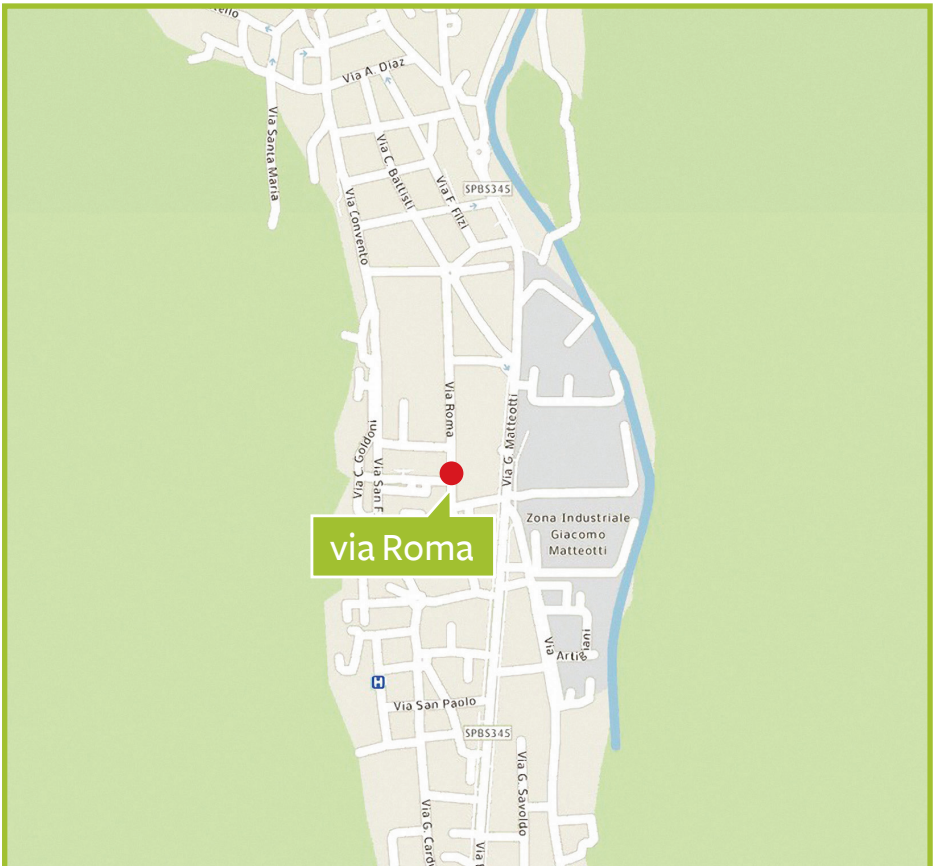
These are all electric appliances and technical products of any type and size which, in order to function, require an electrical plug or batteries.

For example: refrigerators, washing machines, televisions, computers, monitors, mobile phones, video cameras, video games, MP3 players, irons, hair dryers, blenders, vacuum cleaners, etc.

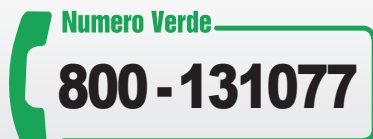
Important: if they are not disposed of correctly, W.E.E.E. are a source of serious air, water and soil pollution.

The Collection Centre: opening hours

MONDAY AND WEDNESDAY	02.00 AM - 06.00 PM
TUESDAY AND THURSDAY	8.30 AM - 12.30 AM
FRIDAY	12.00 AM - 06.00 PM
SATURDAY	8.30 AM - 12.30 AM and 02.00 PM - 07.00 PM



Contact and information



www.apricaspa.it
info@apricaspa.it



CITY OF
GARDONE VALTROMPIA



Aprica SpA

Registered offices

Via Lamarmora 230 - 25124 Brescia

Operational offices

Via Codignole 32f/g - 25124 Brescia