



# IS THAT THE RIGHT PLACE?

We put everything in the right place. Why? Because properly separated waste can become a precious resource.

Separate collections have increased.

Together, we've surpassed the 77.5% mark.



**Dear citizen,**

Six years after the introduction of the separate waste collection system **of top-opening bins**, our community has achieved 77.5% separate waste collection. It's undoubtedly a positive achievement, when percentages are generally remaining steady in the wider context.

The current system allows each citizen to manage their separate waste collection activities freely, with an electronic key used to monitor unsorted waste (grey bin) and organic waste (brown bin). Keys are used by every family and by businesses.

In addition to being a legal requirement which carries a heavy penalty, the correct disposal of waste is a civil duty which serves as a sign of respect for our country and of healthy coexistence with our fellow citizens.

Isolated episodes of fly-tipping and incorrect usage of the bins do not overshadow the efforts of the vast majority of citizens, who - together with the administration - will continue on this virtuous path towards reducing non-recyclable waste and increasing the intrinsic quality of recycled materials. This guide contains detailed instructions on separate waste collection and on how to use the bins, as well as further practical information on services provided.

We know we can count on your collaboration to ensure that Concesio remains focused on the environment and how we use it.

The information will also be available on the Municipality website:

[www.comune.concesio.brescia.it](http://www.comune.concesio.brescia.it)



---

Maintaining a constant commitment to separate waste collection isn't just good for the environment - it's also economically beneficial.

---

The use of the top-opening bins in the local waste collection points brings **significant benefits** to the community.

# WHAT ADVANTAGES?



The top-opening bins mean the service can be used **24 hours a day, seven days a week.**

eliminate drop-offs by citizens from other Municipalities

limit drop-offs of large and bulky waste

encourage us to make waste more compact and reduce its volume

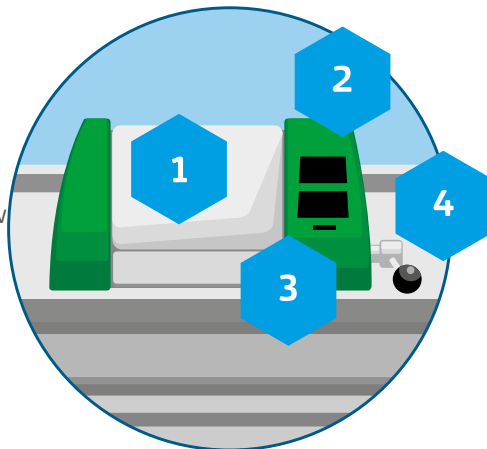
## THE KEY

1 **Waste compartment:** once open, you can access the waste compartment, which sets the maximum waste disposal volume (approx. 18 litres). To reduce disposals, make sure you reduce the volume of your waste.

2 **Display:** a series of icons explains how to dispose of the waste and flag up any issues with closing/the key.

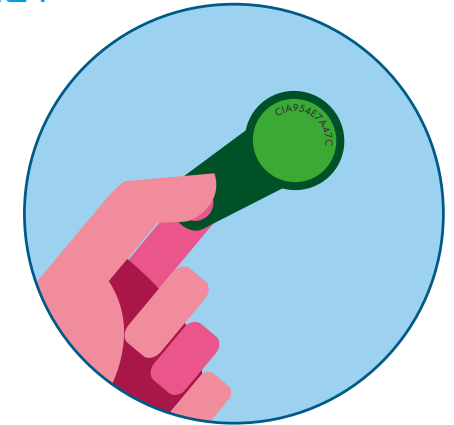
3 **Electronic seal**

4 **Closing lever:** closes the waste compartment.

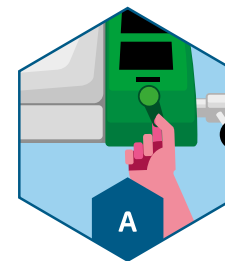


## THE KEY

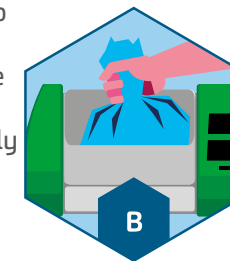
The key is personal and is used to open the tops of the bins. It is given to each family and business. The first key is free. Duplicate keys or replacements due to loss will need to be paid for. To report any malfunctions, please call **freephone number 800 766625**. The line is open between 8:00 and 18:00 from Monday to Friday and between 8:00 and 13:00 on Saturday.



## HOW TO USE IS

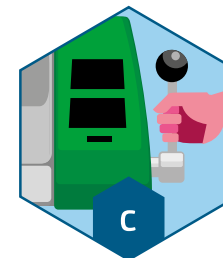


Insert the key into the curved slot in the device and the top of the bin will open automatically

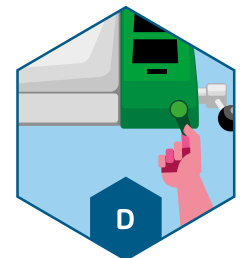


place the bag inside, ensure that it is completely inside the bin (to avoid jamming it)

close the top of the bin using the lever



withdraw the personal electronic key



# ORGANIC WASTE



- September to May: emptied twice a week
- June to August: emptied three times a week



## ORGANIC WASTE GOES IN THE BROWN BIN

Kitchen scraps should be placed in the brown top-opening street bins, which can be opened using the electronic key.

### WHAT TO PUT INSIDE:

raw and cooked kitchen scraps and leftovers, skins and scraps from fruit and vegetables, meat and fish scraps and bones, pasta and starchy foods, bread, rice, fruit pits, shells (of eggs, walnuts, hazelnuts), tea and chamomile tea filters, coffee grounds, corks, used napkins or paper handkerchiefs, used pizza boxes.

### WHAT NOT TO PUT INSIDE:

cuttings and prunings, garden waste (grass, leaves, plant prunings), animal excrement, food packaging paper (greaseproof, laminated or with aluminium), cigarette butts, liquids, oil, chemicals, nappies and sanitary pads, rags, wood, ash (from a fire or barbecue).

# INDIFFERENZIATO

## UNSORTED WASTE

### UNSORTED WASTE GOES IN THE GREY BIN

All non-recyclable waste should be placed in the grey top-opening street bins, which can be opened using the electronic key.

### WHAT TO PUT INSIDE:

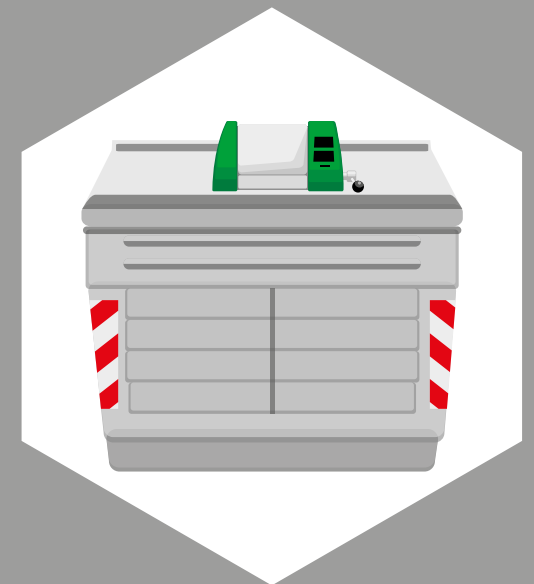
dirty, oiled and sand paper, broken dishes and general ceramics (limited quantities), non-electronic plastic toys without batteries, CDs, DVDs, cassettes and videotapes, filters and bags for vacuum cleaners, nappies, sanitary pads, animal waste, plasters, disposable razors, cigarette butts.

### WHAT NOT TO PUT INSIDE:

batteries, oils, medicines, containers and hazardous materials (glues, paints, solvents, insecticides), energy-consumption lamps and neon lamps, small mirrors.



Emptied three times a week



# PLASTIC



Emptied three times a week



## PLASTIC GOES IN THE YELLOW BIN

Plastic packaging should be placed in the yellow street bins.

### WHAT TO PUT INSIDE:

bottles of mineral water, milk, soft drinks and oil, bottles and dispensers for detergents, soaps and cosmetics, containers for sauces, creams, yoghurt and ice cream, food trays (made of PET, polystyrene and polypropylene), blisters packs and shaped casings, bags and sachets for pasta, crisps, sweets, vegetables and frozen foods (including those with a silver lining inside), nets for fruit and vegetables, transparent film, shopping bags, bags for gardening products, detergents and pet food, flower and plant pots used for

sale and transport, materials for protection and transport of goods (film, bubble wrap, polystyrene chips), disposable plates and glasses (without food residue), clothes hangers made entirely from plastic.

### WHAT NOT TO PUT INSIDE:

toys, trainers, plastic slippers, mats, plastic furniture and products, DVDs, CDs, cassettes and videotapes, photographs and photographic films, pens, umbrellas, disposable razors, jerry cans and buckets.

REMEMBER: EMPTY, RINSE AND/OR CLEAN AND CRUSH CONTAINERS.

# GLASS AND METAL

## GLASS AND METAL GO IN THE GREEN BIN

Glass and metal should be placed in the green street bins.

### WHAT TO PUT INSIDE:

bottles, glasses, jars, glass vases and jugs, trays and containers to store and freeze food, tins and tubes for food, cans for drinks and liquids, aluminium foil, jars, metal hangers, metal caps, spray cans not labelled with danger symbols and coffee pots.

### WHAT NOT TO PUT INSIDE:

ceramic plates and cups, incandescent and energy-saving bulbs, neon tubes, mirrors, glass ceramic (pyrex) or ceramic containers, crystal glasses and objects, plastic bags and spray cans labelled with danger symbols.



Emptied once a week



REMEMBER: EMPTY, RINSE AND/OR CLEAN AND CRUSH CONTAINERS.

---

# PAPER

---

## PAPER GOES IN THE WHITE BIN

Paper and cardboard should be placed in the white street bins. Large boxes cannot be dumped outside of the bins.

### WHAT TO PUT INSIDE:

newspapers, notebooks and magazines (without adhesive, metal or plastic parts), Tetra Pak containers (milk, fruit juices and other drinks), paper bags, cardboard trays and boxes for food, cardboard packaging for toys and clothing, and pizza boxes without food residue.

### WHAT NOT TO PUT INSIDE:

dirty food paper, chemical fax paper or carbonless paper, tax receipts, baking paper, laminated tickets, cellophane wrap, pizza boxes with food residue and plastic bags.



Emptied twice  
and three  
times a week



REMEMBER: RINSE CARTONS

---

# ...AND THE REST?

There's a correct place for every type of waste, even your grandmother's old sofa and the batteries from you remote control.



# MUNICIPAL COLLECTION CENTRE

Via Aldo Moro 8

The Collection Centre is a fully equipped, monitored area where citizens can bring the following types of waste:

- bulky waste
- paper and cardboard
- glass and cans
- plastic

#### \* RAEE

All appliances and technological products, of every type and size, which need an electric plug or batteries to function. For example: refrigerators, washing machines, televisions, computers, monitors, mobile phones, cameras, video games, MP3 players, clothes irons, hair dryers, blenders, vacuum cleaners etc.

**WARNING: if not correctly disposed of, WEEE items are a source of serious pollution in the air, water and soil.**

- cuttings and prunings
- wood (boards, parts of furniture, drawers)
- WEEE\*
- tyres
- scrap metal (bits of disassembled furniture, small items)
- lead batteries
- used vegetable or cooking oil
- used mineral oil (vehicle oil)
- products or containers with hazard labels\*\*
- inert waste (debris, sanitary, rubble)

#### OPENING HOURS

Monday - Saturday	08:30-12:15 14:30-17:15
For more information: 0302751551	



The Collection Centre is accessed using the electronic key to open the top-opening bins.

**Non-domestic users (businesses) can only access the centre if they have the required waste transport documentation (form) and are in compliance with all relevant legislation.**

\*\* Hazardous waste containers display these symbols:



#### TOXIC

fly sprays, acids, thermometers, bactericides, glazes, ice sprays, rat poison, herbicides, insecticides, caustic soda and disinfectants.



#### IRRITANT

bleach, ammonia, trichlorethylene, nitro and synthetic paints, white spirit, car detergents, stain removers, glues, bodywork paints, putties, thinners and adhesives.



#### FLAMMABLE

spray cans, stain removers, solvents, anti-rust coatings with zinc, glues, enamels, nitro and synthetic paints, anti-fog agents, thinners, furniture polish, ethyl alcohol for liqueurs and bodywork polishes.



#### CORROSIVE

batteries, acids and products to unblock pipes.

## BULKY WASTE

A free home pick-up service can be requested for the disposal of heavy and bulky domestic waste, such as furniture and electrical appliances. **Pick-ups are carried out on the second Wednesday of each month.** Booking is essential and can be done by calling **freephone number 800 437678**. The line is open between 8:00 and 20:00 from Monday to Friday and between 8:00 and 15:00 on Saturday.

Waste to be collected must be put out in the street or on the pavement on the agreed day and at the agreed time.

We do not organise clear-outs of basements, attics and other rooms.



## BATTERIES AND DRUGS

Used batteries should be discarded in the special street containers or the containers located in commercial establishments. Alternatively, they can be brought to the Ecocar or Collection Centre.

Expired drugs should be thrown in the appropriate containers located in pharmacies in the Municipality.

Alternatively, they can be brought to the Ecocar or Collection Centre





## ECOCAR



In addition to the Municipal Collection Centre, hazardous domestic waste (solvents, expired drugs, used vegetable and mineral oil and all other waste labelled as hazardous\*\*) can be handed in to the **Ecocar**, Aprica's roving vehicle, which will be in situ in the morning of the **first Thursday of the month at the Pieve market in Via Montini, in the square in front of the Municipal Hall.**

\*\* Hazardous waste containers display these symbols:



Cooking oil, if poured into the sink or released into the environment, is a cause of pollution. Once cooled, pour used vegetable oil into plastic bottles and take them to one of the following containers:

- Costorio, Via S. Giulia (car park in front of the Oratory)
- S. Andrea, Via Camerate (car park in front of ACLI S.Andrea-Boules area)
- Concesio, Via Pascoli (Punto Acqua car park - in front of the Municipal Hall).

## VEGETABLE OILS



## USED CLOTHING



If clean and in good condition, used clothing and other garments can be placed in the yellow street containers located across the Municipality or handed in at the Collection Centre in Via A. Moro 8. These containers are managed by charities who empty them once a week and ensure that the contents are reused.

The Green Service is available for the disposal of green waste including prunings, mown grass and other gardening waste. The Green Service consists of 23 containers made from recycled plastic, each one measuring 120 centimetres in height to make it easier to drop off garden waste. Waste must be poured directly into the containers, **with no plastic bags used.**

This service is also **to be used by residents for domestic** garden waste. **Large quantities** of garden waste can be brought to the Municipal Collection Centre.

## Where Are They?

### Costorio

via Santa Lucia, in front of the binsi

via Vittorio Bachelet, by the park

via Santa Giulia, in front of the oratory

### San Vigilio

via Lodovico Pavoni

via Giovanni XXIII,  
in the car park at the end of via cieca

via Vincenzo Sorlini

via Grandi, on the corner of via Lottieri

via Berlinguer

via Tripoli, on the corner of via Morandi Gilli

### Concesio

via Guglielmo Marconi,  
in the car park by the post office

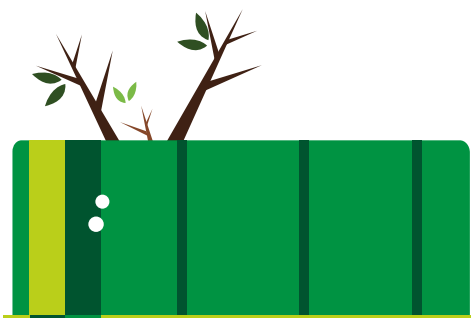
via Walter Tobagi

via Giuseppe Verdi

### Pieve

via Veneto, in the cemetery car park

## GREEN SERVICE



### Roncaglie

largo Gasparo da Salò

via Arturo Toscanini,  
near Monticello Park

### Campagnola

via Girolamo Sangervasio, on the corner of via Mella

via Girolamo Sangervasio,  
in the car park in front of GLS

via Angelo Canossi,  
near Don Luigi Bosio Park

### Sant'Andrea

via John Fitzgerald Kennedy,  
near the bridge over the River Tronto

via John Fitzgerald Kennedy, in the car park in front of ACLI and the boules area

via delle Camerate, behind the wall

via delle Camerate, on the corner of via D. Chiesa  
via Donizetti

# Where should I throw it?



OBJECT	CONTAINER
<b>A</b> Abrasive belt	● Dry waste
Acetate paper	● Dry waste
Acetone	Ecocar-Collection centre
"Acrylic/insulating materials in small quantities from housework"	Collection centre
Adhesive tape	● Dry waste
Advertising sheets	● Paper and cardboard
Air conditioners	Collection centre
Aluminium (sheets)	● Glass and metal
Aluminium bags	● Glass and metal
Aluminium cans	● Glass and metal
Aluminium coffee pots	● Glass and metal
Aluminium containers	● Glass and metal
Aluminium drinks cans	● Glass and metal
Aluminium for food	● Glass and metal
Aluminium sheets	● Glass and metal
Aluminium tins	● Glass and metal
Aluminium trays	● Glass and metal
Aluminium windows	Collection centre
Antennas	Collection centre
Anti-rust spray	Ecocar-Collection centre
Armchair (various sizes)	Bulky collections-Collection centre
Artificial flowers	● Dry waste
Ash	● Dry waste
Audio cassettes and their cases	● Dry waste
Audio/video antennas	Collection centre
Aviary	Bulky collections-Collection centre
<b>B</b> Awning (various sizes)	Bulky collections-Collection centre
Baby bottle	● Dry waste
Baby box	Bulky collections-Collection centre
Backpacks in good condition	Collection centre-Charity containers
Bactericides	Ecocar-Collection centre
Bags (fabric and leather) in good condition	Collection centre-Charity containers
Bags that are still usable in good condition	Collection centre-Charity containers
Baking paper	● Dry waste
Balloons	● Dry waste
Ballpoint pens	● Dry waste
Barbecue	Bulky collections-Collection centre
Bathroom fixtures	Collection centre
Bathtubs	Collection centre
Batteries	Ecocar-Collection centre
Battery chargers	Ecocar-Collection centre

Beach umbrella	Collection centre
Bed base (various sizes)	Bulky collections-Collection centre
Bed frame	Bulky collections-Collection centre
Bed headboard	Bulky collections-Collection centre
Bed rail	Bulky collections-Collection centre
Bedside table	Bulky collections-Collection centre
Beer cans	● Glass and metal
Belts in good condition	Collection centre-Charity containers
Bench (various sizes)	Bulky collections-Collection centre
Beverage cartons (Tetra Pak)	● Paper and cardboard
Bicycles	Bulky collections-Collection centre
Bidet	Collection centre
Bike computer	Ecocar-Collection centre
Bike rack	Bulky collections-Collection centre
Binders	Collection centre
Bird cage	Collection centre
Biro pens	● Dry waste
Biscuit paper	● Paper and cardboard
Blades	● Dry waste
Blankets in good condition	Collection centre-Charity containers
Blender	Ecocar-Collection centre
Blister packs for tablets	● Plastic
Boards made of wood, plastic, aluminium or iron	Collection centre
Boiler	Bulky collections-Collection centre
Boilers	Bulky collections-Collection centre
Bones (small quantity)	● Organic waste
Bookcase (various sizes)	Bulky collections-Collection centre
Books (without plastic cover)	● Paper and cardboard
Bottle caps	● Glass and metal
Bottles for drinks (plastic)	● Plastic
Bottles for kitchen oil (plastic)	● Plastic
Bottling machine	Bulky collections-Collection centre
Bread	● Organic waste
Bread bag (clean)	● Paper and cardboard
Broken glasses	● Glass and metal
Broken shoes	● Dry waste
Broom	Collection centre
Bubble wrap	● Plastic
"Building waste in small quantities from housework"	Collection centre
Bulky furniture	Bulky collections-Collection centre
Buttons	● Dry waste
Calculators	Ecocar-Collection centre

Calendars (remove non-paper parts)	● Paper and cardboard
Camera	Ecocar-Collection centre
Camping-style cookers	Collection centre
Cans	● Glass and metal
Cans and tins for drinks and oil	● Glass and metal
Car batteries	Ecocar-Collection centre
Car bike rack	Bulky collections-Collection centre
Carbon paper	● Dry waste
Cardboard (for packaging)	● Paper and cardboard
Cardboard boxes	● Paper and cardboard
Cardboard boxes for food	● Paper and cardboard
Cardboard packaging	● Paper and cardboard
Carpet	Bulky collections-Collection centre
Carpet cleaner	Bulky collections-Collection centre
Carpet cleaner	Ecocar-Collection centre
Cassette tapes	● Dry waste
Cat litter	● Dry waste
CD player	Ecocar-Collection centre
CDs and their cases	● Dry waste
Ceiling fan	Bulky collections-Collection centre
Ceiling lights	Collection centre
Cellophane	● Plastic
Cellophane film	● Plastic
Ceramic cups	● Dry waste
Ceramic mugs	● Dry waste
Ceramic plates	● Dry waste
Chains	Collection centre
Chair (plastic)	Bulky collections-Collection centre
Chair (wooden)	Bulky collections-Collection centre
Chandeliers	Collection centre
Changing table	Bulky collections-Collection centre
Chemical adhesives	Ecocar-Collection centre
Chemical fax paper or carbonless paper	● Dry waste
Chest	Bulky collections-Collection centre
Chest of drawers	Collection centre
Chewing gum	● Dry waste
Chewing gum	● Dry waste
Chipboard (large quantity)	Collection centre
Chipboard (small quantity)	● Organic waste
Christmas tree (artificial)	Collection centre
Christmas tree (plant)	Green service-Collection centre
Cigarette and cigar butts	● Dry waste
Cigarette butts	● Dry waste

Cigarette packs (excluding internal tissue paper)	● Paper and cardboard
Cloth and ribbons	● Dry waste
Clothes in good condition	Collection centre-Charity containers
Clothes in good condition	Collection centre-Charity containers
Clothes in good condition	Collection centre-Charity containers
Clothes iron	Ecocar-Collection centre
Clothing in good condition	Collection centre-Charity containers
Coat stand	Bulky collections-Collection centre
Coffee	● Organic waste
Coffee bag	● Plastic
Coffee grounds	● Organic waste
Coffee machine	Collection centre
Coffee table (various sizes)	Bulky collections-Collection centre
Colouring pens (markers, crayons)	● Dry waste
Combs and brushes	● Dry waste
Complete PC	Bulky collections-Collection centre
Compostable coffee pods	● Organic waste
Compostable coffee pods	● Organic waste
Computer case with tower	Collection centre
Condoms	● Dry waste
Cooler bags	● Dry waste
Corks	● Organic waste
Corkscrew	● Dry waste
Corrugated fibreboard	● Paper and cardboard
Cosmetic products	● Dry waste
Cosmetics	● Dry waste
Costume jewellery	● Dry waste
Cot	Bulky collections-Collection centre
Cotton buds	● Dry waste
Cotton wool	● Dry waste
Crates (plastic)	Collection centre
Crates (wood)	Collection centre
Crates for fruit (cardboard)	● Paper and cardboard
Cream spray cans	● Glass and metal
Credit cards	● Dry waste
Crisp bag	● Plastic
Crystal glasses	● Dry waste
Crystal objects	● Dry waste
Crystals	● Dry waste
Curtain rail	Bulky collections-Collection centre
Cushions	Collection centre
Cutlery (plastic)	● Dry waste
Cutlery (steel)	● Glass and metal

## D

Cutting board (plastic)	● Dry waste
Cutting board (wood)	Collection centre
Decoder	Ecocar-Collection centre
Demijohn	Collection centre
Desk	Bulky collections-Collection centre
Desk (various sizes)	Bulky collections-Collection centre
Detergent boxes	● Paper and cardboard
Diaries (paper and/or cardboard)	● Paper and cardboard
Dinghies	Collection centre
Dirty pizza boxes	● Organic waste
Dishwasher	Bulky collections-Collection centre
Disinfectants	Ecocar-Collection centre
Disposable plastic cups	● Plastic
Disposable plastic plates (without residue)	● Plastic
Disposable razors	● Dry waste
Dog food	● Organic waste
Dog kennel	Bulky collections-Collection centre
Doormat	Collection centre
Down jackets in good condition	Collection centre-Charity containers
Dresser	Bulky collections-Collection centre
Dried flowers	● Organic waste
Dried flowers and leaves (small quantities)	● Organic waste
Drill	Ecocar-Collection centre
Dry dog food	● Organic waste
Dry leaves and foliage	Green service-Collection centre
Dryer	Bulky collections-Collection centre
Drying rack	Collection centre
DVD player	Ecocar-Collection centre
DVDs and their cases	● Dry waste
Eco-friendly correction fluids	● Dry waste
Egg containers (paper)	● Paper and cardboard
Egg shells	● Organic waste
Electric broom	Collection centre
Electric coffee grinder	Ecocar-Collection centre
Electric grass trimmer	Collection centre
Electric grill	Collection centre
Electric grinder	Ecocar-Collection centre
Electric guitar	Collection centre
Electric hair clipper	Ecocar-Collection centre
Electric heater	Bulky collections-Collection centre
Electric juicer	Ecocar-Collection centre
Electric knife	Ecocar-Collection centre
Electric lawn mower	Bulky collections-Collection centre

## E

Electric mincer	Ecocar-Collection centre
Electric ovens	Bulky collections-Collection centre
Electric power supplies	Ecocar-Collection centre
Electric radiator	Bulky collections-Collection centre
Electric razors	Ecocar-Collection centre
Electric toothbrush	Ecocar-Collection centre
Electric torches	Ecocar-Collection centre
Electrical cables	Ecocar-Collection centre
Electrical stimulators	Bulky collections-Collection centre
Electronic games	Ecocar-Collection centre
Electronic scale	Ecocar-Collection centre
Exercise bench	Bulky collections-Collection centre
Exercise bike	Bulky collections-Collection centre
Expanded polystyrene packaging (large)	Collection centre
Expired drugs (only blister packs or bottles)	Ecocar-Collection centre-Pharmacy containers
Expired medicines (only blister packs or bottles)	Ecocar-Collection centre-Pharmacy containers
External plastic packaging for bottles	● Plastic
Extinguished ash from fireplace	● Dry waste
Extraction hood	Bulky collections-Collection centre
Fan	Collection centre
Fax (electronic equipment)	Bulky collections-Collection centre
Felt pads	● Dry waste
Figurines	● Dry waste
Film films	● Dry waste
Fish tank	Collection centre
Fishing rods	Collection centre
Floppy disks	● Dry waste
Fluorescent tubes	Ecocar-Collection centre
Foam rubber	Collection centre
Folders for paper/cardboard documents	● Paper and cardboard
Folding bed	Bulky collections-Collection centre
Food fats	● Organic waste
Food film without food residue	● Plastic
Food trays with food residue	● Dry waste
Food warmer	Collection centre
Freezer bags	● Plastic
Freezers	Bulky collections-Collection centre
French window (various sizes)	Bulky collections-Collection centre
Frozen food bags	● Plastic
Fruit and vegetables	● Organic waste
Fruit stones	● Organic waste

## F

## G

Fryer	Ecocar-Collection centre
Furniture	Bulky collections-Collection centre
Futon	Bulky collections-Collection centre
Garden gazebo	Bulky collections-Collection centre
Garden rocking chair	Bulky collections-Collection centre
Gas cooker	Bulky collections-Collection centre
Gas ovens	Collection centre
Gas stove	Bulky collections-Collection centre
Gas water heater	Bulky collections-Collection centre
General kitchen leftovers (raw or cooked)	● Organic waste
Gift boxes (metal)	● Glass and metal
Glass bottle	● Glass and metal
Glass bottles	● Glass and metal
Glass bottles for cleaning and personal hygiene products	● Glass and metal
Glass bottles for medicines (empty and rinsed)	● Glass and metal
Glass ceramic containers (pyrex-style)	● Dry waste
Glass ceramic/ceramic baking dishes	● Dry waste
Glass containers for liquid personal hygiene products	● Glass and metal
Glass jars	● Glass and metal
Glass jars for food	● Glass and metal
Glass plate	Collection centre
Glass yoghurt/dessert containers	● Glass and metal
Glasses	● Dry waste
Glasses	● Glass and metal
Glossy drawing paper	● Dry waste
Gloves (fabric)	● Dry waste
Gloves (rubber and latex)	● Dry waste
Glues	● Dry waste
Grain	● Organic waste
Grass	Green service-Collection centre
Grater (metal)	● Glass and metal
Grater (mixed materials)	● Dry waste
Greaseproof paper	● Dry waste
Hair-dryer	Ecocar-Collection centre
Hand mixer	Ecocar-Collection centre
Hangers (metal and wood)	● Dry waste
Hangers (metal)	● Glass and metal
Hangers (metal)	● Glass and metal
Hangers (plastic)	● Plastic
Hard plastic reusable plates	● Dry waste
Hard plastic single-use plates	● Plastic
Hardware	Ecocar-Collection centre
Hats	● Dry waste

## H

Hats in good condition	Collection centre-Charity containers
Hi-Fi	Ecocar-Collection centre
Hi-Fi recorder	Bulky collections-Collection centre
High chair for baby	Bulky collections-Collection centre
Hobs	Collection centre
House plants of any type	Collection centre
Ice cream containers	● Plastic
Ice cream makers	Ecocar-Collection centre
Ice cream stick (wood)	● Organic waste
Ice-cream trays (polystyrene)	● Plastic
Incense	● Organic waste
Inner tubes	● Dry waste
Insecticides	Ecocar-Collection centre
Insecticides (cans)	Ecocar-Collection centre
Insulating materials	Ecocar-Collection centre
iPod	Ecocar-Collection centre
Iron	Collection centre
Iron cabinets	Bulky collections-Collection centre
Iron doors	Bulky collections-Collection centre
Iron doors	Bulky collections-Collection centre
Iron structures	Collection centre
Ironing board	Collection centre
Ironing centre	Collection centre
Irrigation rods	Collection centre
Jackets in good condition	Collection centre-Charity containers
Jar glass	● Glass and metal
Jars and other glass packaging	● Glass and metal
Jeans in good condition	Collection centre-Charity containers
Jugs (crystal)	● Dry waste
Jugs (glass)	Glass and metal
Jute bags	● Organic waste
Keyboard	Ecocar-Collection centre
Keys	● Glass and metal
Kitchen foil	● Glass and metal
Kitchen robot	Ecocar-Collection centre
Kitchen towel (greasy)	● Organic waste
Kitchen worktops	Bulky collections-Collection centre
Labelled spray cans for hazardous materials	Ecocar-Collection centre
Ladder (various sizes)	Collection centre
Lamps (energy-saving, table, neon)	Ecocar-Collection centre
Lamps (floor)	Bulky collections-Collection centre
Lamps (floor)	Collection centre
Lamps (fluorescent)	Ecocar-Collection centre

Laundry basket	Collection centre
Lawn clippings	Green service-Collection centre
Leaf blower	Collection centre
Leaflets	● Paper and cardboard
Leather	● Dry waste
Leftover medication	● Dry waste
Lids (metal)	● Glass and metal
Lids (plastic)	● Plastic
Lids for jars (metal)	● Glass and metal
Light bulbs	Ecocar-Collection centre
Light bulbs (neon)	Ecocar-Collection centre
Lighters	● Dry waste
Lipsticks	● Dry waste
Magazine rack	Collection centre
Magazines (non-laminated)	● Paper and cardboard
Magazines (without adhesive, metal or plastic parts)	● Paper and cardboard
Mannequin	Bulky collections-Collection centre
Massage table	Bulky collections-Collection centre
Matches (used)	● Organic waste
Mattresses	Bulky collections-Collection centre
Mechanical scale for weighing people	Collection centre
Medical plates and radiographs	● Dry waste
Mercury (thermometers)	Ecocar-Collection centre
Metal cans	● Glass and metal
Metal cans	● Glass and metal
Metal cans for food and animal food	● Glass and metal
Metal caps	● Glass and metal
Metal food cans	● Glass and metal
Metal pans	Collection centre
Metal straps	● Glass and metal
Metal trays	Collection centre
Microwave	Bulky collections-Collection centre
Milk cartons	● Paper and cardboard
Mineral oil (used)	Ecocar-Collection centre
Mirror (various sizes)	Collection centre
Mobile phone	Ecocar-Collection centre
Mobile phones	Ecocar-Collection centre
Modem	Ecocar-Collection centre
Monitor	Ecocar-Collection centre
Mosquito net	Collection centre
Motorcycle helmet	Collection centre
Motorcycle trunk	Collection centre
Mouse	Ecocar-Collection centre

N

Mozzarella	● Organic waste
Mozzarella bag	● Plastic
Mozzarella packaging	● Plastic
MP3 player	Ecocar-Collection centre
Multi-purpose robot	Collection centre
Nail polish	● Dry waste
Nappies/incontinence pads	● Dry waste
Neon tubes	Ecocar-Collection centre
Nets for fruit and vegetables	● Plastic
Newspapers	● Paper and cardboard
Newspapers and magazines	● Paper and cardboard
Non-compostable coffee capsules	● Dry waste
Non-laminated flyers	● Paper and cardboard
Non-laminated leaflets	● Paper and cardboard
Non-laminated notebooks	● Paper and cardboard
Non-plastic containers for hazardous household waste	Ecocar-Collection centre
Non-stick pans	Collection centre
Nuts and bolts	Collection centre
Nylon	● Dry waste
Nylon stockings	● Dry waste
Objects made of plush or wadding	● Dry waste
Office binders without rings	● Paper and cardboard
Office chair	Bulky collections-Collection centre
Outdoor blinds	Collection centre
Packaging film including bubble wrap	● Plastic
Packaging for appliances in plastic or polystyrene (small)	● Plastic
Packing tape	● Dry waste
Padded upholstery	Collection centre
Padlocks	● Glass and metal
Paint spray cans	Ecocar-Collection centre
Paint tins	Ecocar-Collection centre
Painted bins (plastic)	Ecocar-Collection centre
Painted wood	Collection centre
Paintings (various sizes)	Collection centre
Paints	Ecocar-Collection centre
Pallets	Bulky collections-Collection centre
Pallets	Bulky collections-Collection centre
Pan lids (metal)	Collection centre
Pans	Collection centre
Paper	● Paper and cardboard
Paper and cardboard packaging	● Paper and cardboard
Paper bags	● Paper and cardboard
Paper shopping bags	● Paper and cardboard

O

P

Paper soiled with detergent products or other substances	● Dry waste
Paper tickets (not receipts)	● Paper and cardboard
Paper tissues (used)	● Organic waste
Paper towels (clean)	● Paper and cardboard
Paper towels (greasy)	● Organic waste
Parchment	● Paper and cardboard
Pencils	● Dry waste
Personal computer	Collection centre
Pesticides	Ecocar-Collection centre
Pesticides	Ecocar-Collection centre
Pet carrier	Collection centre
Pet litter	● Dry waste
Photocopier	Bulky collections-Collection centre
Photographic films	● Dry waste
Photographic roll film	● Dry waste
Photographs and photographic film	● Dry waste
Pizza boxes (clean)	● Paper and cardboard
Plastic bags	● Plastic
Plastic bags	● Plastic
Plastic bags for pasta	● Plastic
Plastic bottles for cleaning and personal hygiene products	● Plastic
Plastic bottles for detergents and plastic detergents	● Plastic
Plastic buckets	● Dry waste
Plastic caps	● Plastic
Plastic coffee bags	● Plastic
Plastic containers for detergents	● Plastic
Plastic containers for hazardous household waste (empty)	● Plastic
Plastic containers for hazardous household waste (with residue)	Ecocar-Collection centre
Plastic containers for hygiene products	● Plastic
Plastic containers for liquid products for home cleaning	● Plastic
Plastic egg containers	● Plastic
Plastic flower pots purchased with the product	● Plastic
Plastic flowerpot holder	Collection centre
Plastic folders for documents	● Dry waste
Plastic hair brushes	● Dry waste
Plastic packaging for eggs	● Plastic
Plastic packaging for pasta	● Plastic
Plastic packaging for snacks, etc.	● Plastic
Plastic plates with food residue	● Dry waste
Plastic shopping bags	● Plastic
Plastic slippers	● Dry waste
Plastic straws	● Dry waste

Plastic tickets for public transport	● Dry waste
Pocket umbrella	Collection centre
Polaroid photos	● Dry waste
Polisher	Bulky collections-Collection centre
Polystyrene containers for food	● Plastic
Polystyrene packaging	● Plastic
Polystyrene tubs	● Plastic
Porcelain	● Dry waste
Portable GPS	Ecocar-Collection centre
Pouffes	Bulky collections-Collection centre
Printer	Collection centre
Printer cartridges	Ecocar-Collection centre
Printouts	● Paper and cardboard
Pruned branches	Green service-Collection centre
Pruning wood	Green service-Collection centre
Public transport tickets	● Paper and cardboard
Putty	Collection centre
Pyrex	● Dry waste
Radiator cover	Collection centre
Radio	Ecocar-Collection centre
Radiographs	● Dry waste
Rags	● Dry waste
Railings	Collection centre
Rat poison	Ecocar-Collection centre
Razor blades	● Dry waste
Receipts on thermal paper	● Dry waste
Rechargeable batteries	Ecocar-Collection centre
Refrigerators	Collection centre
Remote controls	Ecocar-Collection centre
Rocking chair	Bulky collections-Collection centre
Roller shutter (various sizes)	Bulky collections-Collection centre
Roller shutter box	Collection centre
Roll-on deodorant (plastic)	● Plastic
Roof rack	Bulky collections-Collection centre
Rubber	● Dry waste
Rubber bands	● Dry waste
Rubber boots in good condition	Collection centre-Charity containers
Rubber hoses	Collection centre
Rubber objects	● Dry waste
Rug	Collection centre
Safe	Collection centre
Salad	● Organic waste
Salt/sugar container (cardboard)	● Paper and cardboard

R

S

Samples of cosmetic products	● Dry waste
Sandpaper	● Dry waste
Sanitary napkins	● Dry waste
Sawdust (clean)	● Organic waste
Sawdust soiled with detergent products or other substances	● Dry waste
Scanner	Collection centre
Scissors	Collection centre
Scratching post	Collection centre
Seafood shells	● Organic waste
Sewing machine	Bulky collections-Collection centre
Shaving brushes	● Dry waste
Sheet glass	Collection centre
Sheets in good condition	Collection centre-Charity containers
Shelf	Collection centre
Shelf (iron)	Collection centre
Shelf (various sizes)	Collection centre
Shirts in good condition	Collection centre-Charity containers
Shoe dye	Ecocar-Collection centre
Shoe polish tubes	Ecocar-Collection centre
Shoe rack	Bulky collections-Collection centre
Shoes in good condition	Collection centre-Charity containers
Shoes in good condition	Collection centre-Charity containers
Shower cabin	Bulky collections-Collection centre
Shower gel (plastic container)	● Plastic
Shutters	Bulky collections-Collection centre
Sideboard	Bulky collections-Collection centre
Single/double bed	Bulky collections-Collection centre
Sink	Bulky collections-Collection centre
Skates	Collection centre
Ski boots in good condition	Collection centre-Charity containers
Skirting boards	Collection centre-Charity containers
Skis and rackets	Collection centre
Slats	Bulky collections-Collection centre
Slicer	Collection centre
Small appliances	Ecocar-Collection centre
Small electrical appliances	Ecocar-Collection centre
Small electronic devices	Ecocar-Collection centre
Small quantities of aggregates from DIY/home building work	Collection centre
Small quantities of plaster from DIY/home building work	Collection centre
Small quantities of roof tiles from DIY/home building work	Collection centre
Small quantities of rubble from DIY/home building work	Collection centre
Small quantities of tiles from DIY/home building work	Collection centre



Snowboard	Bulky collections-Collection centre
Soap	● Dry waste
Socks (sponge, wool or cotton) in good condition	Collection centre-Charity containers
Sofa bed	Bulky collections-Collection centre
Sofas	Bulky collections-Collection centre
Solvents	Ecocar-Collection centre
Soot	● Dry waste
Speakers	Ecocar-Collection centre
Spoiled food	● Organic waste
Sponge	● Dry waste
Spray cans with eco-friendly propellant	● Glass and metal
Spray cans with flammable gas	Ecocar-Collection centre
Stain removers	Ecocar-Collection centre
Stamp pads	● Dry waste
Stationery (pencils, pens, rulers, etc.)	● Dry waste
Steel (small objects)	● Glass and metal
Steel buckets	● Glass and metal
Steel saucepans	Collection centre
Steel tins for food	● Glass and metal
Step platform	Collection centre
Stereo	Ecocar-Collection centre
Stereo speakers	Collection centre
Sticking plasters	● Dry waste
Sticky labels	● Dry waste
Stool	Bulky collections-Collection centre
Stroller	Bulky collections-Collection centre
Strollers	Bulky collections-Collection centre
Suitcase	Collection centre
Sun lounger	Collection centre
Sweet wrappers (paper)	● Paper and cardboard
Sweet wrappers (plastic)	● Plastic
Synthetic ice	● Dry waste
Syringes protected with cap	● Dry waste
Tablet	Ecocar-Collection centre
Tandem bicycle	Bulky collections-Collection centre
Tanning lamp	Bulky collections-Collection centre
Taps	Collection centre
Tax receipts	● Dry waste
Tea bag	● Paper and cardboard
Tea filters	● Organic waste
Telephone	Ecocar-Collection centre
Terracotta pots	Collection centre
Tetra Pak	● Paper and cardboard

T

Tetra Pak containers	● Paper and cardboard
Tetra Paks	● Paper and cardboard
Tetra Paks for drinks	● Paper and cardboard
Thermal paper	● Dry waste
Thermometers	Ecocar-Collection centre
Thinners	Ecocar-Collection centre
Ties in good condition	Collection centre-Charity containers
Tiles (small quantity)	Collection centre
Tin cans for food	● Glass and metal
Tins for cooking oil	● Glass and metal
Tires	Collection centre
Tires (rimless)	Collection centre
Toaster	Ecocar-Collection centre
Toner	Ecocar-Collection centre
Toner cartridges	Ecocar-Collection centre
Toothbrushes	● Dry waste
Toothpaste (in plastic tube)	● Plastic
Toothpaste tube	● Plastic
Toothpicks	● Organic waste
Tops for glass jars (metal)	● Glass and metal
Towel rack	Collection centre
Towels in good condition	Collection centre-Charity containers
Toys (non-electronic)	● Dry waste
Transformers	Ecocar-Collection centre
Trays and other hard plastic objects (small)	● Dry waste
Treadmill	Bulky collections-Collection centre
Trichlorethylene	Ecocar-Collection centre
Tricycle for children	Bulky collections-Collection centre
Trolleys	Bulky collections-Collection centre
Trunk	Collection centre
T-shirts and sweaters in good condition	Collection centre-Charity containers
Tuna cans	● Glass and metal
Tuna cans	● Glass and metal
TV (various sizes)	Bulky collections-Collection centre
TV equipment	Bulky collections-Collection centre
Umbrella	Collection centre
Upholstery	Collection centre
Vacuum cleaner	Collection centre
Vacuum cleaner bags (used)	● Dry waste
Vacuum cleaner dust	● Dry waste
Vacuum cleaner filters	● Dry waste
Valet stand	Bulky collections-Collection centre
Vegetable or cooking oil (used)	Ecocar-Collection centre

U  
V

W

Vegetables	● Organic waste
Vegetables	● Organic waste
Venetian blinds (various sizes)	Bulky collections-Collection centre
Vials for injections	● Dry waste
Vibration plate	Bulky collections-Collection centre
Video camera	Ecocar-Collection centre
Video recorder	Ecocar-Collection centre
Videotapes and their plastic cases	● Dry waste
Vinyl records	● Dry waste
Wadding	● Dry waste
Walker	Collection centre
Wall cabinets	Collection centre
Wardrobe door	Bulky collections-Collection centre
Wardrobes	Bulky collections-Collection centre
Washbasin	Bulky collections-Collection centre
Washing machine	Bulky collections-Collection centre
Watches	● Dry waste
Water jug filter	● Dry waste
Wax candles	● Dry waste
WC	Bulky collections-Collection centre
Weed killers	Ecocar-Collection centre
Wet clean paper	● Paper and cardboard
Wheel rims	Collection centre
Wheelchair	Bulky collections-Collection centre
White spirit	Ecocar-Collection centre
Wicker	Collection centre
Wicker basket	Collection centre
Window fixtures (aluminium)	Collection centre
Window fixtures (wood)	Collection centre
Window/French window frame	Bulky collections-Collection centre
Windscreen wipers	● Dry waste
Wire glass	● Dry waste
Wood wax	● Dry waste
Wood wax	● Dry waste
Wooden doors	Bulky collections-Collection centre
Wooden planks	Collection centre
Wooden shelf	Bulky collections-Collection centre
Wooden windows	Collection centre
Woodworm killer	Ecocar-Collection centre
Wrapping paper	● Paper and cardboard
Yoghurt containers	● Plastic
Yoghurt foil lid	● Glass and metal
Yoghurt pots	● Plastic

Y

## WEBSITE



All information on the separate waste collection system can be found on [www.apricaspa.it](http://www.apricaspa.it). You'll be able to access the following features on the site:

- local services
- where should I dump it?
- bulky waste collections

You can also view and download the **List of Services** from [www.comune.concesio.brescia.it](http://www.comune.concesio.brescia.it) or by visiting the **Municipal offices in Piazza Paolo VI, 1.**

This document summarises all the services Aprica provides the citizens of Concesio and describes the procedures used to guarantee quality.

## FURTHER INFORMATION

**VIDEO SURVEILLANCE:** To check that waste is disposed of correctly, we've set up a fixed video surveillance service at the Municipal Collection Centre in Via Aldo Moro 8, as well as a mobile video surveillance service of street containers and other sensitive areas.

**MITIGATION OF ENVIRONMENTAL IMPACT :** Barriers made from green plastic have been installed around the street containers, to protect and reduce the visual impact of the binsi.

We can only give waste a new life if we separate it correctly. Did you know that...



...a watering can can be made from five plastic bottles



...a moka pot can be made from 37 cans

...kitchen waste creates soil that can be used for growing plants and flowers



...a new glass bottle can be made from seven glass jars



This guide contains useful  
information for  
**the correct handling  
and  
disposal of waste**

For more information or to report an issue:



Visit [www.apricaspa.it](http://www.apricaspa.it) for updates



**Download PULIamo, the app that helps you correctly  
separate waste and keep the city clean**

**Aprica SpA**

Registered office  
Via Lamarmora, 230  
25124 Brescia

Operational headquarters

Via Codignole, 31/g  
25124 Brescia

Follow us

